

# PROPOSAL TO PLACE "Ekonos" IN THE LINE

Grain reservoir

Input of grain into Ekonos



Ekonos



Output of the finished product to the elevator



CENTRIFUGAL SEPARATOR  
ø475

AIR LOCK  
DEVICE



ASPIRATION PIPING

7

BY CUSTOMER

2

3/1

1

3/2

4

5

Ekonos

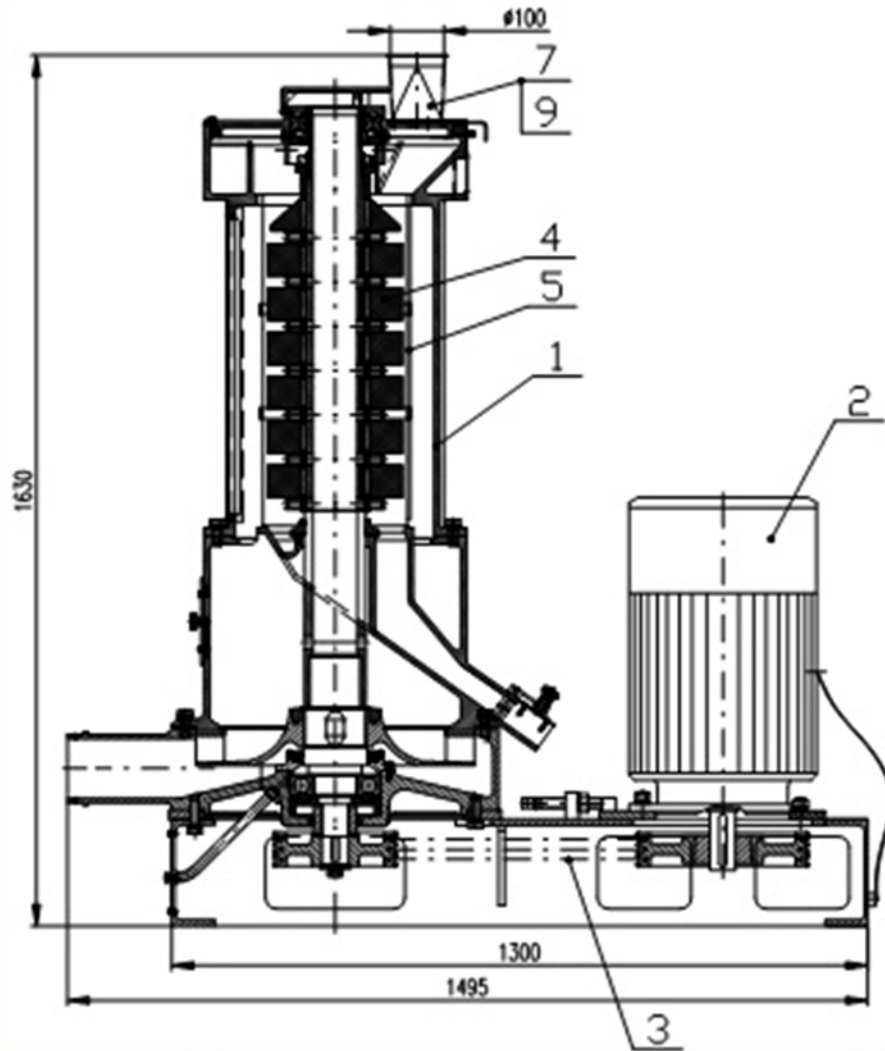
6

8

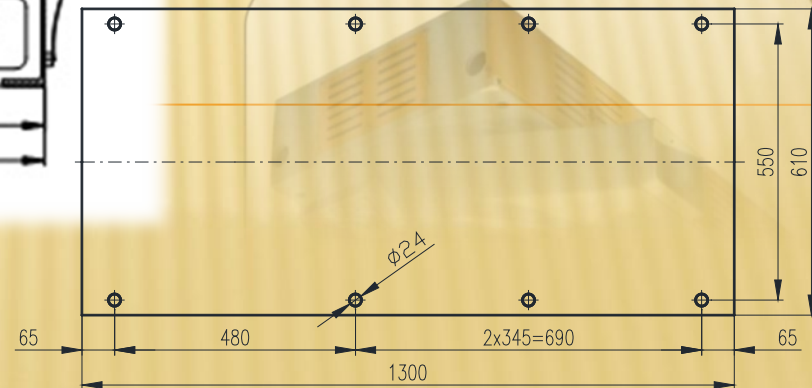
BY CUSTOMER

- |                   |                          |
|-------------------|--------------------------|
| 1. Reservoir      | 5. Input regulation gate |
| 2. Magnet         | 6. Peeling machine       |
| 3/1. Upper probe  | 7. Aspiration pipe       |
| 3/2. Bottom probe | 8. Elevator              |
| 4. Fallout gate   |                          |

# PEELING – HULLING MACHINES



Dimensional frame sketch



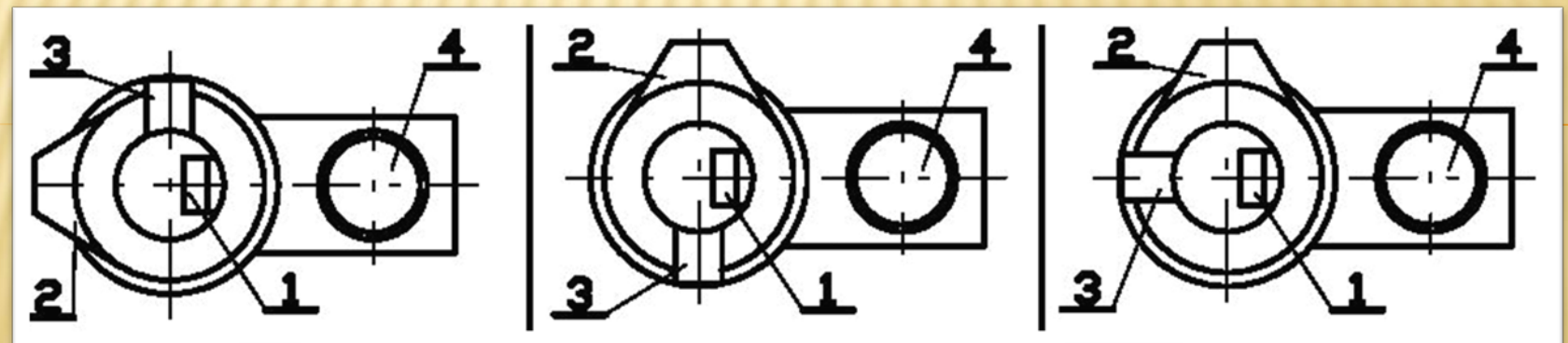
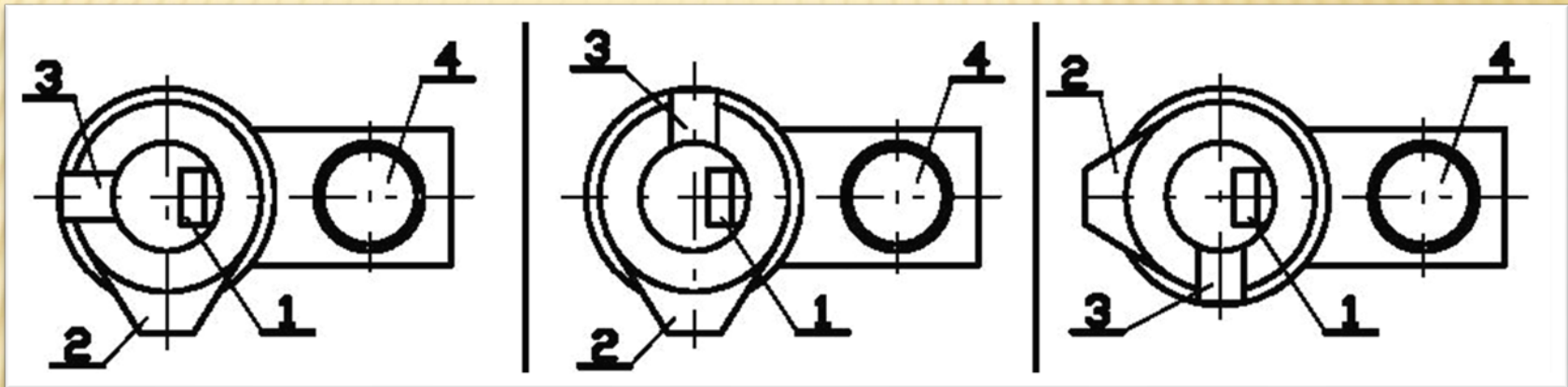
# ARRANGEMENT VARIANTS

**1.** Grain input

**2.** Air exhaust

**3.** Grain output

**4.** Electric motor





# PEELING – HULLING MACHINES

is used for peeling and hulling barley to pearls of all requested sizes and also for decorticating of lentils, wheat, rye, millet, peas, rice etc.

Processed grain is subject to the peeling – hulling effect in a working space full of grain (between the machine jacket and the grinding wheels), while it is intensively aerated and cleaned from abrasions following its way to the machine outlet.

The machine output is controlled by an outlet gate regulator adjustable according to requested quality of processed grain.

The peeling – hulling intensity can also be influenced by the control of aspiration.

Planning the machine installation it has to be placed below a storage bin to ensure uninterrupted and regular supply of grain to the machine. The machine exhaust must be connected to a separation and aspiration system which is not included within the machine equipment.

## Technical data

<b>Output - Normaly peeling of cereals</b>	t.h <sup>-1</sup>	1,6 to 1,8
<b>Output - Intensice peeling of cereals</b>	t.h <sup>-1</sup>	0,8 to 1,2
<b>Output - Peas peeling</b>	t.h <sup>-1</sup>	1,5 to 1,7
<b>Output - Peeling barley for the production of groats processing on the first run</b>	t.h <sup>-1</sup>	1,4 to 2,5
<b>Number of revolutions at the outlet</b>	rpm	1465
<b>Pressure Loss</b>	Pa	147 to 196
<b>Input</b>	kW	22
<b>Quantity of air intake fan</b>	m <sup>3</sup> .h <sup>-1</sup>	15 to 25
<b>Weight</b>	kg	993

**Abrasive discs**



**Top entry**



**Abrasive wheels complete**



**TORROFA**







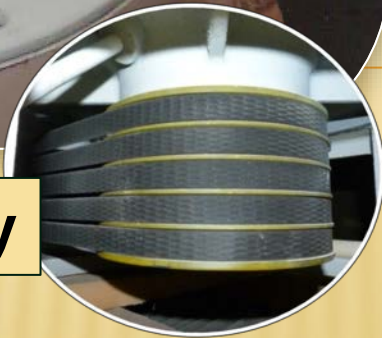
**Mesh casing**



**Massive machine shell**



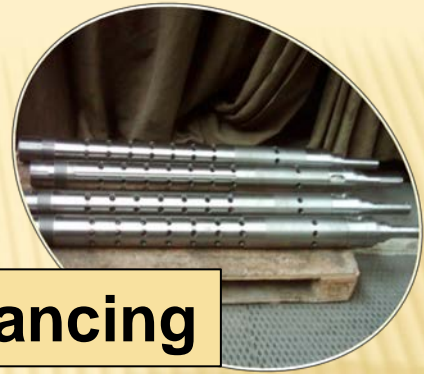
**V- belt pulley**







**Fan wheel**



**Shaft balancing**



**TORÖFA**







**Sieve set  
in the machine**



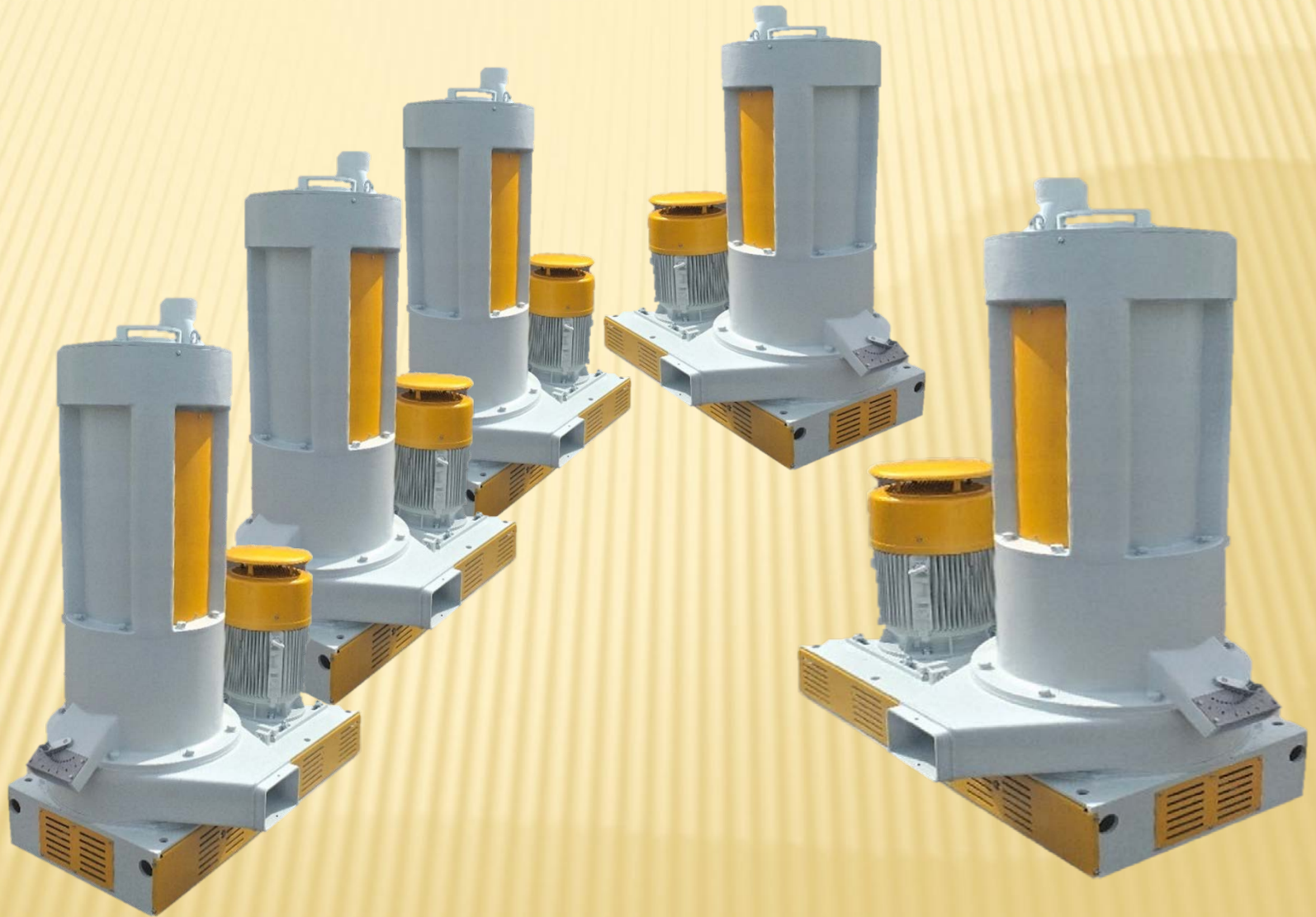
**Fan wheel**



**Mechanical output regulation**



# Shipment of finished **Ekonos** machines



**TOROF**  
A  
TOROF

# Thank you for attention

Dělnická 384

530 00 Pardubice

CZECH REPUBLIC

**Táňa Mičková**

tel.: + 420 775 200 898

**Roman Janovský**

tel.: + 420 728 332 250

e-mail: [torofa@email.cz](mailto:torofa@email.cz)

web: [www.torofa.cz](http://www.torofa.cz)

**TOROF**  
The logo for TOROF consists of the word 'TOROF' in a bold, sans-serif font. The letters 'O' and 'O' are replaced by grey gears. The letter 'F' is also grey, while 'T', 'R', and 'A' are in a dark red color. The logo is positioned vertically on the left side of the slide.